

Best View of Tibet

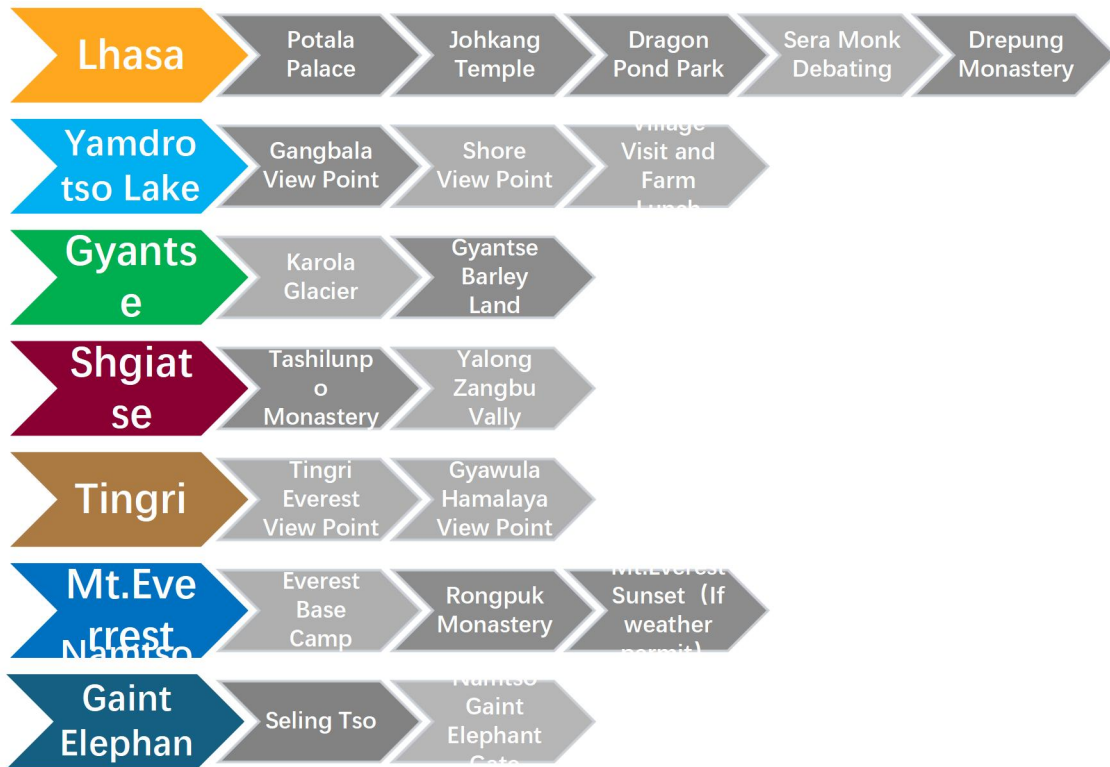
Mt. Everest & Heavenly Lake

Lhasa - Shigatse – EBC – Seling Tso-Namtso Tso - Northern Tibet Grassland 10-Day Tour

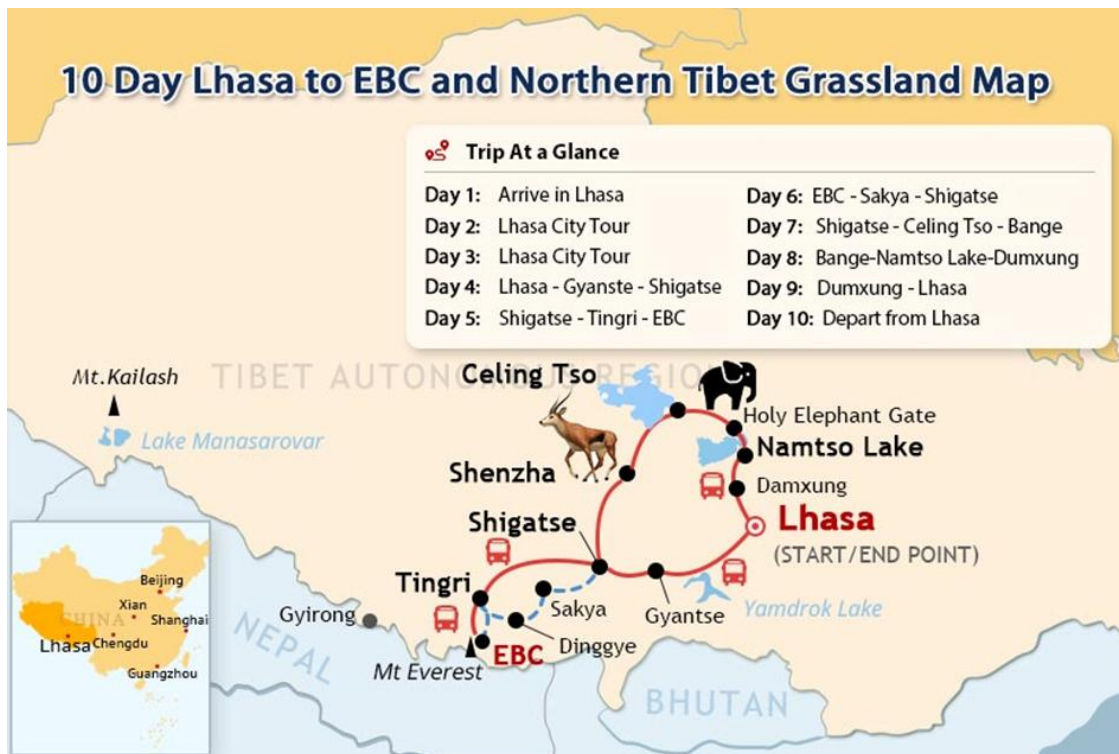
This is no ordinary trip—it's an expedition designed to stir your soul. Witness the roof of the world from Everest Base Camp, stand in reverence before the majestic Potala Palace, and feel a deep sense of peace within ancient monastic walls. And that's only the start. Journey with us into the untamed heart of Tibet's northern plains, where soaring peaks meet expansive, mirror-like lakes. Explore the pristine shores of sacred waters—from Serling Tso, Tibet's largest lake, to the breathtaking expanse of Namtso. Come face-to-face with the region's iconic wildlife: graceful Tibetan antelope, spirited wild donkeys, and powerful wild yaks. It's more than a tour—it's your personal National Geographic moment, brought to life.



| Cities and Attractions



| Tourist Map



Attractions and Activities



Lhasa Debating in Sera Monastery

At Sera Monastery, the debating courtyard session takes place every afternoon at 3 o'clock. The monks engage in lively debates, standing or sitting, questioning and answering, and discussing Buddhist philosophy. This ritual is one of the most intriguing and visually captivating activities during visits to Tibetan monasteries.



Potala Palace

Potala Palace is the world's highest and most magnificent palace. It once served as the administrative and religious center for past Dalai Lamas, equivalent to the imperial palace of old Tibet. It houses countless stupas, murals, Buddha statues, and treasures, making it an absolute treasure among World Heritage sites.



Visit to a Local Family by the shore of Yamdrok Lake

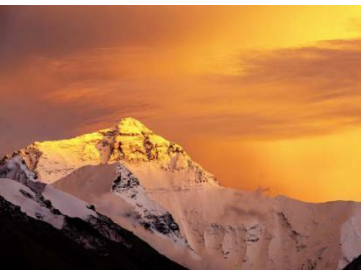
When passing by the beautiful Yamdrok Lake, we have crafted a leisurely and delightful journey for you. You'll have the opportunity to enjoy a panoramic view of the lake from the mountaintop and experience an encounter with the lake waters at the lake shore, as well as pay a visit to a local farmhouse at the tail end of Yamdrok Lake, where you can explore a Tibetan farmer's home.

The World's Most Beautiful Himalayan Mountain View



The Himalayan Gyawula pass is renowned as the most beautiful viewpoint in Tibet. The majestic Himalayan peaks stand in a row above clouds, you can see five world-famous peaks including Mount Everest with altitudes exceeding 8000 meters command a breathtaking presence.

Everest Base Camp, Mt. Everest Sunset



The ultimate destination of this journey is the Everest Base Camp, situated at an elevation of 5200 meters. Here you can witness the massive structure of the north face of Mount Everest. As the sun sets in the west, Everest transforms into a golden pyramid, casting a radiant glow. You will spend the night near the Everest Base Camp, marveling at the night sky and the Milky Way.

Namtso Gaint Elephant Gate

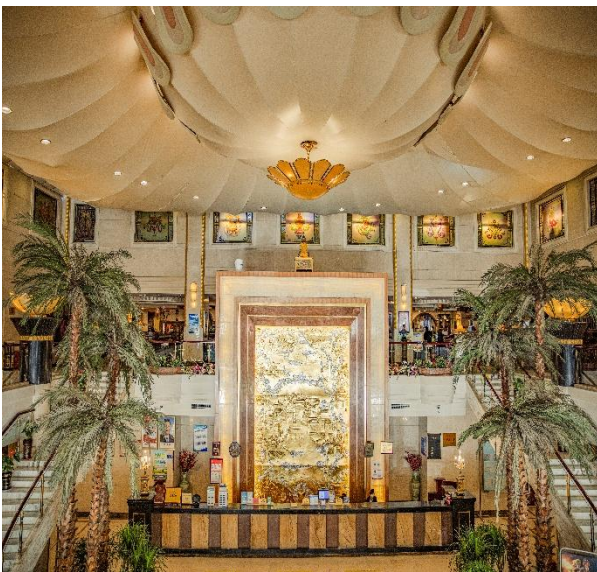


Where the turquoise waters of Namtso meet the sky, the Sacred Elephant Gate emerges—a magnificent stone arch sculpted by nature's patient hand. Like a celestial elephant bowing to drink from the holy lake, it stands guard between azure waves and snow-dusted peaks.

In this sacred space, silence speaks louder than words. The air carries ancient prayers, while the mirror-like waters reflect eternity itself. Standing before this natural wonder, you don't just see beauty—you feel the soul of Tibet.

I Tibetan Hotels Throughout the Journey

Throughout your journey, we will arrange comfortable and cozy hotels each day, many of which are locally owned and operated by Tibetans with rich ethnic charm. They are strategically located near Tibet's most vibrant cultural attractions or old city areas, making it convenient for your exploration and shopping. All accommodations are twin rooms or king-size beds in 3 to 4 star hotels, with private bathrooms and a warm and comfortable ambiance. In Everest Base Camp (spring, summer, and fall seasons), you will stay in tent guesthouses operated by local Tibetan villagers, where you can appreciate the beautiful sunset and the brilliant night sky over Everest.



I Comfortable Transportation Arrangements

You will travel in our dedicated tourist vehicles. For 2-5 people, we provide comfortable 7-9-seater tourist vans; for 6-13 people, we offer comfortable tourist minibuses or mid-sized buses. We ensure small group size that each guest receives attentive care and service from both the driver and guide. Our drivers conduct regular safety checks and cleaning of the vehicles each day, creating a comfortable living space for you throughout the journey.



I High-altitude Travel Safety Assurance

Every visitor to Tibet may experience varying degrees of symptoms related to high-altitude sickness. This is because the body undergoes an adaptation process when transitioning from lower altitudes to the higher. The majority of tourists adjust quickly with proper rest upon reaching Lhasa. However, to alleviate any concerns and to provide assistance in case of unexpected health issues, we are here to support you to the best of our ability.



Medical Oxygen Tanks Equipped with the Vehicle

When traveling to higher altitudes such as Everest, we equip the vehicle with medical oxygen cylinders. If you continuously feel uncomfortable during the journey, you can use the medical oxygen provided for the entire group, ensuring a supply of oxygen for several hours.



Insurance for High-altitude Sickness Assistance

In addition to providing accidents insurance, we have specifically supplemented your coverage with high-altitude sickness. In case you experience high-altitude sickness and require emergency medical assistance during the trip, this service can be utilized to alleviate the financial burden associated with seeking medical attention in a foreign country.

I Application of Tibet Permits for Foreigners and Taiwanese

Foreigners (including overseas Chinese) need to provide information to the Tibet Tourism Bureau to apply for "Tibet Travel Permission". You need to provide documents according to our guidance.

- If you are coming to China for tourism purpose with "L" Chinese tourist visa, you need to provide clear and complete passport page images and Chinese visa images.
- If you are working, studying, residing in China, or visiting China for business, in addition to your passport and visa images, you also need to provide certificate from your Chinese company or school.
- If you plan to enter Tibet directly from Nepal, you need to personally visit the Chinese Embassy in Kathmandu to apply for a Chinese visa(Single Entry 30 days). Please go to our local office in Kathmandu at least 3 working days in

advance, We will arrange all the procedures for your Chinese visa application. If you previously have a Chinese visa, your existing visa will be revoked upon obtaining the new visa. In addition to the visa fee charged by the embassy, you are required to pay an additional \$20 service fee for visa processing.

The entire procedure is fully serviced, you just simply provide the documents to our travel agency. The deadline for submitting the application is 10 working days before the tour departure. If want to go to Mt.Kailash, you need to send the documents to us 15-20 working days in advance.

Once all approval procedures are completed, we will send the Tibet Travel Permission to your designated address via email or mail (within China only). When boarding the train/flight, the staff at the port will check your Tibet Travel Permission, please ensure its proper safekeeping.

I Airport and Train Station Shuttle Service

Our services include shuttle transfers between Lhasa Airport or train station to downtown in Lhasa. Upon your arrival , our airport service coordinator will arrange for your transfer from the airport or train station to your hotel in the city. Similarly, when you depart from Lhasa, your airport drop-off service will be pre-arranged.

As the arrival times of tourists vary, we have specified several time slots for your service. When booking your flight, please try to choose a flight that arrives in Lhasa around the scheduled shuttle service times to avoid extended waiting times at the airport. if the number of arriving tourists is less than 3 at the same time, we may use public transport to take you from the airport to the city.

Shuttle Schedule from Airport to Lhasa	Shuttle Schedule from Lhasa to Airport
10:00 (Morning Arrival)	06:30 (Morning Departure 1)
13:30 (Afternoon Arrival 1)	08:00 (Morning Departure 2)
16:00 (Afternoon Arrival 2)	12:00 (Afternoon Departure)
18:30 (Evening Arrival)	

Airport to Lhasa covers a distance of 70 kilometers and takes approximately 60 minutes.

Arrival in Lhasa by train, we will pick you up according to your arrival time with no waiting required. For arrivals at non-scheduled times, delayed or early arrival flights, we may use airport shuttle for airport-downtown transfer service.

I Happy Moment



For Your Memorable
Experience

Brief of the Itinerary

Days	Place and Distance	Tour and Activities	Meals	Hotels
Day01	Arrive in Lhasa ▲ 3650m 🚗 70kms/1hr Driving	Upon arrival in Lhasa, our tour guide will meet you at the airport/train station and take you to hotel in Lhasa. In the rest of the day, please rest well and adapt to the altitude.	/	Xinding Hotel Lhasa or Similar
Day02	Lhasa City Sightseeing	Visit the Drepung Monastery in the morning, in the afternoon, visit the Sera Monastery and watch the monks' debate activities.	Breakfast /Welcome Dinner	Xinding Hotel Lhasa or Similar
Day03	Lhasa City Sightseeing	Visit the Potala Palace, and participate in local Tibetan folk activities in the Local Park under the palace; Visit the Jokhang Temple and Barkor Street. Having tea the sweet tea house to experience Tibetan social culture.	Breakfast /Tea Break	Xinding Hotel Lhasa or Similar
Day04	Lhasa – Yamdrotso Lake - Gyantse - Shigatse ▲ 3650-5030-3600m 🚗 360kms/8hrs Driving	Depart from Lhasa and head west to Gyantse, pass by Yamdrok Yumco Lake, visit rural families by the lake and enjoy farm lunch. Visit Karola Glacier and Gyantse Bally farm land.	Breakfast /Farm house Lunch	Shiga-Yangcha Hotel Shigatse or similar

Day05	<p>Shigatse - Tingri-Everest Base Camp</p> <p>▲ 3600-4300-5200 m</p> <p>🚗 340kms/8hrs Driving</p>	<p>Head to the Himalayas. Enjoy the beautiful scenery of Mount Everest and the Himalayas at the Dingri View point and the Gawula View point. Enjoy the beautiful sunset of Mount Everest (subject to weather conditions).</p>	<p>Breakfast</p>	<p>Rongbuk Tent Guest House</p>
Day06	<p>Mt. Everest - Dingyal -Shigatse</p> <p>▲ 5200-4300-3600m</p> <p>🚗 360kms/8hrs Driving</p>	<p>Enjoy the beautiful scenery of Mount Everest in the morning and visit the Rongbuk Monastery. Return to Shigatse via Dingyal and Sakya County. On the way, we will see the eastern slope of Mount Everest and Mount Lhotse at the Himalayan Xilin View point.</p>	<p>Breakfast/Dinner with Song and Dance Performance</p>	<p>Shiga-Yangcha Hotel Shigatse or similar</p>
Day07	<p>Shigatse-North Tibet Grassland-Seling Tso-Bange</p> <p>▲ 3600-4700m</p> <p>🚗 550kms/9hrs Driving</p>	<p>Though the drive today covers a considerable distance, smooth roads and light traffic make the journey feel surprisingly swift. If opportunity arises, you may even visit a local nomad's tent and experience the authentic daily life of a herding family. Amid the vast Tibetan wilderness, watch for the graceful Tibetan antelope roaming the open plains and the elegant black-necked cranes soaring across the skies.</p>	<p>Breakfast</p>	<p>Bange Hanting Hotel or Similar</p>
Day08	<p>Bange – Namtso Giant Elephant Gate – Dumxung</p> <p>▲ 4700-4300m</p> <p>🚗 330kms/6hrs Driving</p>	<p>Today, you will journey deep into the heart of the northern Tibetan plateau, exploring two magnificent destinations: Pemo Lake and the awe-inspiring Sacred Elephant Gate on the northern shore of Namtso. Afterward, you'll continue along the eastern edge of the lake toward Damxung. The route to the Sacred Elephant Gate is rugged—a round trip of roughly 100 km—but the experience is truly unforgettable. From the high vantage point, you'll witness endless stretches of turquoise water meeting rolling, snow-capped peaks. Approximately 40% of the drive traces the lakeshore, offering spectacular views that accompany you every step of the way.</p>	<p>Breakfast</p>	<p>Dumxung Shenyang Hotel or Similar</p>
Day09	<p>Dumxung – Lhasa</p> <p>▲ 4300-3650m</p> <p>🚗 180kms/2hrs Driving</p>	<p>After an exhilarating yet lengthy journey, we will accompany you back to Lhasa. Upon arrival, we'll take you for a rejuvenating Tibetan herbal bath to soothe your travel fatigue. The afternoon and evening are yours to freely explore—whether wandering through bustling markets or discovering the city's vibrant atmosphere,</p>	<p>Breakfast/Lunch</p>	<p>Xinding Hotel Lhasa or Similar</p>

		you'll have a final opportunity to savor precious moments in this ancient and storied city.		
Day10	Lhasa Departure	Escort tourists from the hotel to the airport/train station to end their Tibet trip.	Breakfast	/

*Due to the need for official reservations for the Potala Palace visit, we are unable to confirm the specific timing of the Potala Palace ticket reservation in advance. The sequence of the itinerary may undergo adjustments.

*When in heavy rain season in the summer or a snowstorm weather in the winter, when returning to Shigatse from Mount Everest, it may be possible to cancel the passing through Dingjie and Sakya, and instead return to Shigatse via the original route of Gyawula Pass and Tingri. When it happens, the company will inform in paper when you are travelling in Tibet.

*Road to Giant Elephant Gate around 100km are quite bumpy, but it is the only section bumpy road of the while journey, tourists should be aware of that when booking the trip.

*During the winter season, when the Everest Base Camp tented lodges are closed, we will relocate accommodations to the nearest village to Everest, Basong Village or Zhaxizong Village.

I Service

Service included

- Tibet Travel Permit and all required local travel documents for this tour (excluding expedited processing fees);
- Local tour transfers, 5-29 seats comfortable tourist vehicle according to the group size;
- All entrance ticket fees and eco bus for all tourist sites listed in the itinerary;
- Meals listed in the itinerary;
- Knowledgeable English-speaking Tibetan local tour guide shared in your group (For prices of tour guides in other languages, please inquire);
- All hotels listed in the itinerary or equivalent three-star hotels. Upgrades are available for an additional fee. (Single room supplement required when not sharing the room);
- Free shuttle between Lhasa Railway Station and the downtown hotel according to your arrival/departure time.
- Service Charge & Government Taxes;
- Arrangements including planning, handling, operational, and communication charges;
- Tourist accident/casualty insurance;
- Additional services include fine Tibetan souvenirs, a tourist map, portable oxygen, medical oxygen in the vehicle, bottled mineral water, and more.

Service Excluded

- China Visa (If you need visa assistance services, especially for Chinese Group Visa from Nepal to Tibet,

feel free to contact us for more details.);

- International flight to and out of China;
- Domestic flight/train to and out of Lhasa (If you need us to book the domestic flight/train tickets, please contact us for the details.);
- Single Room Supplement: Hotels default to double occupancy with twin-bedded rooms. If you prefer a single room or room sharing isn't possible, a single room supplement is necessary. Please consult the travel consultant for specific pricing details.
- Some Meal expenses not included in the Tour (the guide will assist in arranging and recommending meals; you are responsible for the cost)
- Porters and Yaks for carrying luggage during Mount Kailash trek;

Required Tips

While you traveling in Tibet, it is kindly required to tip the guide and driver if you are satisfied and appreciate their services. We recommend tipping \$7(50 RMB) per day per person to be shared between the driver and guide.

I Tour Notice

- Before applying for the Tibet Travel Permit, please ensure that your passport has a validity period of at least 6 months.
- When entering Tibet from Kathmandu, China visa needs to be processed in Kathmandu. Please do not apply in your home country in advance. If tourists previously had a long-term valid Chinese visa, it will be replaced with a 30-day valid group tourist visa when applying in Kathmandu.
- Only Chinese Yuan is accepted in Tibet. If you need Chinese Yuan, you can exchange it with US dollars locally or withdraw cash from ATMs.
- Maintain good health before entering Tibet and avoid catching a cold.
- When traveling on transportation to Tibet, both the airport and train station will check the Tibet Travel Permit. Please keep this official document safe and avoid writing or drawing on it.
- Before traveling to Tibet, please confirm that you have received the Tibet Travel Permit and check and verify your personal information.
- People with serious hypertension, heart disease, asthma, pregnant women, etc., are not recommended to travel to Tibet.
- If worried about altitude sickness after entering Tibet, you can take a moderate amount of Rhodiola oral liquid or capsules before entering.
- During the Tibet tour, you are required to travel with the group throughout the journey and cannot leave the group activities at will.
- Pack vitamins and regular medications in your luggage.
- When traveling at high altitudes, drink plenty of water, engage in slow-paced activities, and consume fruits and vitamin supplements.
- Avoid smoking and drinking alcohol when you are new to high altitudes.

Tour Itinerary day by day in Detail

Day 01 Arrive in Lhasa, Airport/Train Station Pickup, Check-in at the Hotel



Meals: /

Hotel: Xinding Hotel Lhasa or Similar

Welcome to Tibet! Upon your arrival, our friendly guide and driver will warmly welcome you at the airport, presenting you with a traditional Tibetan white scarf called "Khata." With just a one-hour drive on the expressway (70 kilometers), the driver will take you to comfortable hotel in downtown Lhasa. After checking in at the hotel, take the time to rest and acclimatize to the altitude (3,650 meters), ensuring a good and healthy start to your journey on the plateau.

Day 02 Lhasa City Tour: Visit Drepung Monastery and Sera Monastery Debating

Meals: Breakfast
/Welcome Dinner

Hotel: Xinding Hotel Lhasa or Similar

Today, you will explore two distinctive Monastery in Lhasa, Drepung and Sera, both offering a unique insight into Tibetan Buddhism. You will visit the Buddhist halls, Buddhist colleges, and the monks' kitchen, witnessing how they engage in special debates to study Buddhist teachings.

Sera Monastery is renowned for its lively Buddhist debates, showcasing the essence of Tibetan Buddhism. Monks employ exaggerated body language, engaging in dance-like discussions about Buddhist philosophy, demonstrating their knowledge in a spirited manner.

In the evening, the guide will accompany the group to a local restaurant for a welcome dinner, marking the beginning of your journey in Tibet.



Day 03 Lhasa City Tour: Visit Potala Palace and Jokhang Temple

Meals: Breakfast

Hotel: Xinding Hotel Lhasa or Similar



Today, let's explore into the treasures of Lhasa, the Potala Palace, the former residence of the Dalai Lama and acclaimed as the world's highest palace. The Jokhang Temple and Barkhor Street, the Center of Tibetan Faithboth, both designated UNESCO World Heritage Sites.

The Potala Palace, towering majestically over the red hills in the center of Lhasa, was once the religious and political center of Tibet. As you climb the 365 steps to the main building, you'll explore the Dalai Lama's former political hall, the prayer halls, and the tomb stupa.



Here, you'll encounter remarkable murals and exquisite Buddha statues, showcasing the accumulated wealth and treasures of ancient Tibet.

The Jokhang Temple, revered for housing the 12-year-old statue of Shakyamuni, is considered the holiest site in Tibet and a lifelong pilgrimage destination for Tibetans. You can join the pilgrims to walk in Barkor street and experience the soul of the city. The guide will also accompany you to a local Tibetan teahouse, offering insight into the social culture.

Day 04 Lhasa-Gyatse-Shigatse: Yamdrotso Lake, Karola Glacier

Meals: Breakfast/ Farm house Lunch

Hotel: Shiga-Yangcha Hotel Shigatse or similar

Drive for approximately 7 to 8 hours (340 kilometers) to reach Shigatse. Along the way, you will visit two breathtaking natural landscapes – Yamdrok Lake and the Karola Glacier. You will enjoy a scenic 20-kilometer drive following the disappearing shoreline of the Lake. We will stop at a village by the lake, where you can walk into the homes of lakeside farmers, explore their households, and indulge in a delightful farmhouse lunch.



After lunch, drive for approximately 1 hour to visit one of Tibet's most beautiful glaciers – the Karola Glacier, the enormous glacier tongue extends to the roadside, resembling a frozen waterfall hanging over the road and above your head.

Following the Karola Glacier, we will pass by Lake Manla and the ancient town of Gyantse, proceed to Shigatse, the second-largest city in Tibet.

Day 05 Shigatse – Tingri – Everest Base Camp: Gyawula Viewing Point, Everest Base Camp

Meals: Breakfast

Lodging: Everest Base Camp Tent Guest House



After breakfast, we will start a 6.5-hour drive (330 kilometers) to the top of the world – Mount Everest. Along the way, you will visit several viewpoints where you can catch glimpses of Everest. The journey culminates with an overnight stay at Everest Base Camp (EBC).

Departing from Shigatse, you'll be accompanied by rural farmland and villages. Approximately 4 hours into the journey, you'll approach Dingri County, where you'll have your first view of

Everest from the Dingri Viewpoint. Upon entering the Everest scenic area, you'll be treated to breathtaking panoramic views of the Himalayan range from Gawula Pass. The 7000 to 8000-meter peaks of the Himalayas stand proudly above the sea of clouds, creating a majestic and awe-inspiring spectacle.

Next, you'll proceed on the dedicated road leading to Everest, with the mountain growing larger and closer until you reach the northern face base camp. From the base camp, Everest appears like a colossal pyramid standing before you. We will strive to arrive at Everest Base Camp before sunset, allowing you the opportunity to witness the magnificent natural phenomenon of the sunset casting golden hues upon the mountain.

(During the winter season, when the Everest Base Camp tented lodges are closed, we will relocate accommodations to the nearest village to Everest, Basong Village or Zhaxizong Village.)

Day 06 Mt. Everest - Dingyal -Shigatse: Everest East side Viewpoint

Meals: Breakfast/Dinner with Song and Dance Performance

Hotel: Shiga-Yangcha Hotel Shigatse or similar

Taking a stroll near the base camp to savor the beautiful moments of the early morning. After breakfast, the guide will take you to visit Rongbuk Monastery, the world's highest-altitude monastery, famous for being the location where the sea waves engulfed the last piece of land in the movie "2012." It is also an excellent vantage point for capturing the natural and cultural landscapes of Mount Everest. After leaving Everest, we will drive you to the Xilin View point to admire the breathtaking views of the eastern slope of Everest, and Mt. Lhotse, and pass through the ancient town of Sakya before returning to Shigatse.

Upon arriving in Shigatse in the evening, the guide will invite you to share a traditional Tibetan dinner, celebrating the successful completion of the Everest journey. You will have the opportunity to taste local traditional delicacies while enjoying the distinctive folk songs and dances of Shigatse.



Day 07 Shigatse –Northern Tibet Gralssland:Seling Tso Lake

Meals: Breakfast

Hotel: Bange Hanting Hotel or Similar

On the last morning of your will visit the largest monastery in western Tibet, Tashilhunpo Monastery. It has been the seat of Panchen Lamas and is known for its grand scale and magnificent architecture. It houses the world's largest gilded bronze statue, stupas of the Panchen Lamas, and exquisite Buddhist murals.

After the visit to Tashilhunpo Monastery, we will travel to Bange.

A 550-kilometer drive across the boundless grasslands of northern Tibet's Changtang Plain is nothing short of a once-in-a-lifetime journey. Spanning an immense 400,000–500,000 square kilometers—an area rivaling Africa's great savannas—this vast plateau stretches out like an endless green ocean, encircled by a succession of snow-dusted mountain ranges.



This is a voyage full of wonders, one that will reshape your very idea of “vastness.” Life thrives across these plains: herds of yaks and sheep carpet the earth, wild yaks charge in the distance, and elegant Tibetan antelope bound across the path. Each turn reveals something new. Not long after departing Shigatse, we'll stop at a natural hot spring—ideal for a soothing foot soak—before truly immersing ourselves in the heart of the plateau.



The deeper you go, the more you become part of the landscape—a place where earth meets sky, and body and spirit merge. In any season—spring, summer, or autumn—the land offers its surprises: a hidden turquoise lake, a sudden wall of white peaks, or a fleeting encounter with Tibetan antelope.

At the far edge of the grassland lies Serling Tso, Tibet's largest lake, shimmering like an inland sea. With an area of 2,391 square kilometers, it's as large as metropolitan Shanghai and three times the size of New York City. Standing on its shores at 4,700 meters above sea level, you'll behold what seems to be an ocean suspended in the sky.

Tonight, you'll rest in Bangor County—also at 4,700 meters—in a hotel equipped with oxygen supply. Though the altitude is formidable, after over a week on the plateau and a stay near Everest, you'll be more than ready to embrace this unforgettable night at the roof of the world.

Day 08 Seling Tso Lake – Namtso North Shore - Damxung: Namtso Giant Elephant Gate

Meals: Breakfast

Hotel: Dumxung Shenyang Hotel or Similar

Today brings us to the most soul-stirring moment of our journey—the northern shore of Namtso Lake. After a rugged 60-kilometer drive, you'll arrive at what feels like another world: the Sacred Elephant Gate, where deep blue waters stretch to the horizon like an inland sea, embraced by an unbroken chain of snow-capped peaks. The scale is almost beyond imagination.

We depart from Bange, a quiet town nestled in the vast northern Tibetan grasslands, and continue our traverse across the high plateau. Along the way, yaks graze peacefully, wild asses roam freely, and Tibetan antelope race like wind across the horizon. Today unfolds as a procession of stunning lakes—each more captivating than the last. Passing Bamucuo Lake, said to be as pure as a fairy's tear, you'll soon realize it's merely the prelude to nature's grand spectacle.

As our vehicle navigates the rough tracks, the northern shore of



Namtso gradually reveals itself like a living scroll. Shepherds and their flocks, distant snowy peaks, and shimmering blue waters accompany us for much of the route. When you finally climb to the high vantage point on the northern shore, the view that unfolds may remind you of an ocean—vast, rhythmic, boundless—yet unlike any sea you've ever known. This one is impossibly blue, mirror-calm, and cradled by eternal snow. In its presence, life's burdens seem to dissolve, quieted by a silence that feels like grace.



At the Sacred Elephant Gate, you'll stand in awe of nature's sculpture—a monumental stone form shaped by wind and time, standing guard over this sacred blue expanse. After taking in its majesty, we continue across the wide meadows along Namtso's northeastern shore toward Damxung, where we'll spend the night, drawing ever closer to Lhasa and the close of our remarkable journey.

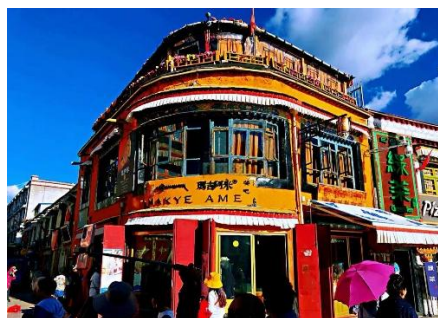
Day 09 Damxung - Lhasa



Meals:
Breakfast/Lunch

Hotel: Xinding Hotel Lhasa or Similar

Today marks the final chapter of our wonderful journey as we make our way back to Lhasa. A smooth three-hour drive on the expressway completes our remarkable loop through Tibet—a route that has showcased the very best of this unique land.



Upon arrival, your guide will accompany you to experience a rejuvenating Tibetan herbal bath, perfect for soothing tired muscles after your travels. The late afternoon and evening are yours to enjoy at leisure—whether wandering through Lhasa's vibrant markets, discovering hidden corners of the city, or simply soaking in the atmosphere of this ancient capital one last time.

Day 10 Depart from Lhasa, Airport/Train Station drop off

Meals: Breakfast

Hotel: /

Your Tibet journey officially concludes today, and We will accompany you to the airport/train station. We appreciate to spend this wonderful time with us in Tibet. Wishing you a safe journey ahead!

